

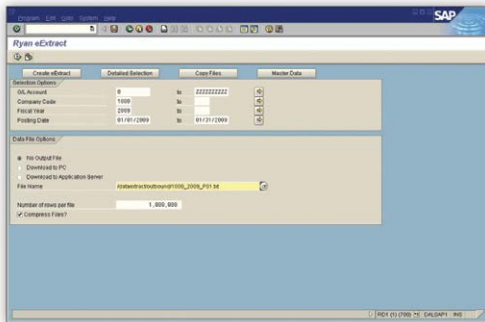


## Innovative Data Extraction Technology

Retrieving data from your SAP® system for use in a review and audit can be time consuming, complicated, and risky. Ryan eExtract® for SAP® offers a customized, advanced business application programming solution that provides simplified SAP® data extraction, enabling the quick and efficient selection and retrieval of SAP® transactions while creating a delimited text file that easily reconciles to general ledger balances.

Standard SAP® transaction processing often utilizes clearing accounts. On a goods receipt document, the expense account is debited, and the clearing account is credited. On invoice entry, the clearing account is debited, and the accounts payable (AP) control account is credited. As a result, the expensing of the goods does not occur at the time of invoice entry, so the general ledger expense account is not directly linked to the invoice receipt.

Ryan eExtract® includes all relevant information on one line by utilizing several “corresponding” fields. These fields mitigate risk and provide a more reliable process for compiling the data than SAP® table extraction by capturing the corresponding goods receipt information for each invoice, including the general ledger expense account.



Ryan eExtract® provides a centralized portal for extracting data, as well as a sophisticated utility for transferring files between the SAP® service application to the SAP® client machine.

Ryan eExtract® has four main functions:

- Mass data extraction
- Ad-Hoc querying and reporting
- Data transferring
- Master data extraction

### Benefits of Ryan eExtract®

- Simplified Data Extraction**  
 Gain full access to financial transactions containing relevant information for a traditional or reverse audit. Purchase order, invoice, tax, and payment information are included to minimize additional data requests from auditors.
- SAP® Integration and Customization**  
 Ryan eExtract® for SAP® works with versions R/3 3.1, R/3 4.6, R/3 4.7, ECC 5.0, and ECC 6.0. Modifications to the standard code can be made, enabling the program to work with other SAP® versions and/or archived data.
- Detailed Reporting**  
 Ryan eExtract® for SAP® produces an audit report that includes all information on one line by utilizing several corresponding fields, as opposed to standard SAP® transaction processing that often utilizes clearing accounts. These fields capture the corresponding goods receipt information for each invoice, including the general ledger expense account.



*“Ryan has provided BASF outstanding value by recovering overpaid taxes while identifying and implementing tax automation solutions, streamlining tax decision processes, and integrating industry-leading tax software to improve our tax performance.”*

**Frederick W. Jenkin**  
 Manager, Sales and Use Tax Audits and Special Projects



### Award-Winning Tax Services

For additional information  
**1.855.RYAN.TAX**  
[www.ryan.com](http://www.ryan.com)

© 2014 Ryan, LLC. All rights reserved. All logos and trademarks are the property of their respective companies and are used with permission.